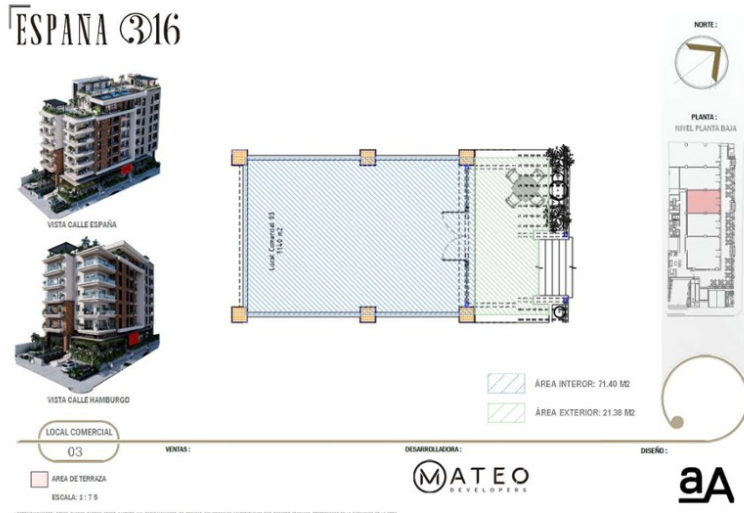


# España316 Local 3

España 316, Versailles

-- -- 997 m2 LND.

71 m2 CONST.



Price:

**\$297,435 usd**

Type:

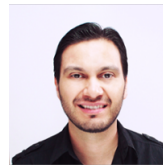
**Commercial**

Region:

**Rio Pitillal South**



Agent



**Jorge Guillen**

(322) 306-0535

jorge@tropicasa.com

Agency



**España 316 (Tropicasa Realty)**

España 316, Versailles

Discover Modern Elegance in Puerto Vallarta's Vibrant Versailles Neighborhood ! Welcome to España 316, where contemporary Mexican design meets tropical living. Nestled in the heart of Puerto Vallarta's most dynamic neighborhood, these...

## Features & Amenities

Beach Front	Furnished	Pool	AC
--	--	--	--
Parking	Stories	Year Built	Single Level
Street	--	2025	Yes
Elevator	Guest House	Allow Pets	Fire Place
--	--	Yes	--
Floor	Roof	Tennis	Sewer
--	Terrace	--	City
School	Dues Include		
--	--		
View		Room Types	
Street		--	
Appliances			
--			

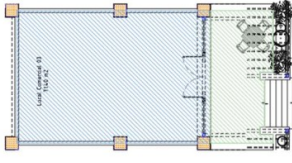
# ESPAÑA 316



VISTA CALLE ESPAÑA



VISTA CALLE HAMBURGO



AREA INTERIOR: 71.40 M2  
AREA EXTERIOR: 21.36 M2



LOCAL COMERCIAL  
03

VENIAS:

DESARROLLADORA:



DISEÑO:



AREA DE TERRAZA  
ESCALA 1:176

